

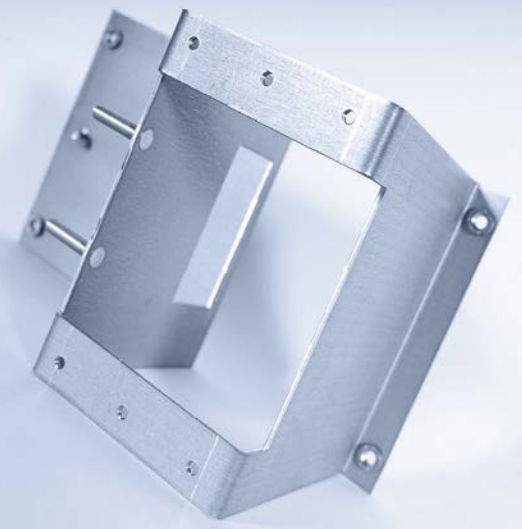
CHAPCO

USA HIGH PERFORMANCE CONTRACT MANUFACTURING SOLUTIONS



BUILDING PARTNERSHIPS NOT JUST PARTS

- 60 years of manufacturing expertise
- New 151,000ft² advanced manufacturing facility
- 2 shifts , 24/7 production
- Continuous investment in infrastructure, quality and security



INFRASTRUCTURE

In 2026, Chapco, Inc. moved to a new, 151,000ft², advanced manufacturing facility in Southeastern Connecticut. This strategic move brings our operations under one roof at the crossroads of the Northeast's industrial and defense corridors. Purpose-built for precision, scalability, and long-term growth, the facility positions Chapco for the next era of advanced manufacturing.



Core Capabilities

- Automated Laser Cutting and Punching
- Automated and CNC Precision Bending
- Multi-Axis CNC Machining
- AWS Certified Welding
- Finishing and Surface Treatments
- Design for Manufacturing & Assembly and Value Engineering
- Prototype to Production
- End to End Contract Assembly
- Packaging, Inventory Management, and Fulfillment

Industries Served

- Defense, Naval and Submersible
- Military Ground Systems
- Aerospace and Transport
- AI Infrastructure and Data Centers
- Medical Equipment and Devices
- OEM - Original Equipment Manufacturers
- Luxury Sports Goods
- Food Production and Distribution
- Industrial Automation
- Advanced Electronics
- HVAC, Fire Safety and Prevention

MANUFACTURE



SHEET METAL FABRICATION MISSION READY

We are proud to say that our components and assemblies are running in Naval surface combatants and submarine systems, rotary and fixed-wing aircraft, ground combat vehicles, and marine defense platforms. This is an industry our team is proud to serve, every day.

Snapshot

CAGE:

85006

SAM UEI:

VUA5GYK66K98

D-U-N-S:

122208978

NAICS:

332322 Sheet Metal
Work Manufacturing

SIC:

4333 Sheet Metal Work

WEBSITE:

Chapcoinc.com

ISO:

270447

Awards

- SBA New England Manufacturer of the Year
- Middlesex Chamber of Commerce Manufacturer of the Year
- SBA Connecticut Exporter of the Year

DEFENSE & CRITICAL INDUSTRIES

When lives depend on it, Chapco delivers. Our vertically integrated manufacturing model provides the flexibility to support programs from prototype through full production. We deliver mission ready, high-reliability components and assemblies that help our war fighters accomplish their mission and get home safely.



As an approved supplier to defense primes and sub-primes, our team understands that program acceleration, unplanned operational requirements, and surge capacity demands are operational realities, not abstractions.

You will have a direct line to people with answers, proactive communication, on-time delivery, and schedule transparency. We invite your supplier qualification team to audit our facility, review our QMS, and meet the engineers and operators building your components.



NAVAL &
MARITIME
CONSORTIUM



American Welding Society
CONNECTICUT SECTION

LIGHTS OUT FABRICATION

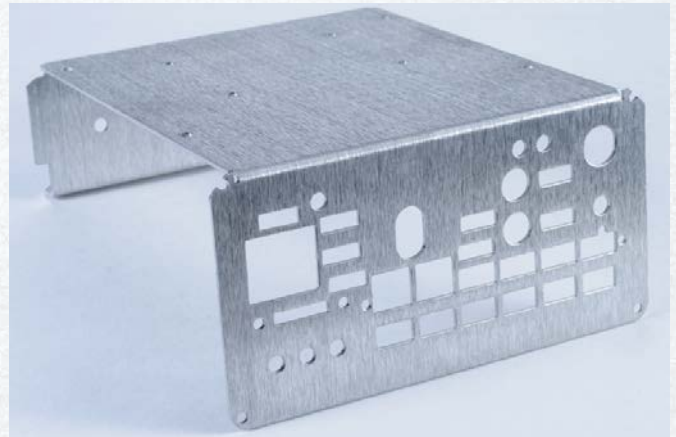
Scale On-Demand. Deliver 24/7. Zero Compromise.

Chapco's advanced lights-out production runs around the clock with state-of-the-art automation, delivering fast lead times, consistent geometrics, and certified quality assurance.



TruMatic 6000 Fiber Laser/Punch:

- TruDisk 3001, solid state laser cuts at 1,338 inches per minute for enhanced cutting speeds.
- Forming, tapping, and extrusions up to 60" x 120" blanks.
- Material thicknesses up to 0.188"
- Sheet master for automated material loading, part removal, web removal, part stacking, and sorting of multiple parts simultaneously.
- Integrated 20 ton punch forms up to 900 strokes/minute.
- Deburring and scratch-free processing to form complex features including knock-outs, extrusions, integrated hinges, formed flanges, 4" louvers, half sheers, beading, tapping, CSK, C-bore, engraving, and roll forming.



TruLaser 3030 Fiber:

- TruDisk 3001, solid state laser cuts at 1,338 inches per minute for enhanced cutting speeds.
- Processes blank sheets up to 60" x 120"
- Cold rolled steel up to .625" thick.
- Stainless steel & aluminum up to .5" thick.
- Copper up to 0.188" thick.
- Brass up to 0.250" thick.
- Galvanized and galvanized steel up to 7 gauge.
- Automatic sheet change in "lights out" mode.



TruBend Cell 7000:

- Compact press brake with bending robot and material handling unit.
- World's fastest bendcell at 4 seconds per bend.
- Material thicknesses at .010" - .187".
- 19.65" x 14.95" blank size.
- 3.3 lbs max blank weight.
- ToolMaster system for automatic tool changes.
- Dynamic drive concept, six-axis back-gauge for precision, and the ACB (Automatically Controlled Bending) system for consistent, accurate angles.



SINGLE SOURCE FABRICATION

Integrated metal fabrication services to deliver production ready components and assemblies from a single source.



Precision Sheet Metal - Complex Geometries

- Fiber laser cutting, punching, forming with Trumpf TruMatic 6000 Fiber Laser and Trumpf 3030 TruLaser Fiber
- Lights-out fabrication for high volume and rapid scaling
- Hardware insertion/pemming
- CNC and conventional milling, turning, and tapping
- Tight tolerance machined components
- Hybrid fabricated & machined assemblies

CNC Press Brake Bending

- Precision forming with five LVD and Accurpress CNC press brakes
- 30 and 60 ton power presses
- Trumpf TruBend Cell 7000
- Forming capacity up to 175 tons and 12' length

Complex Weldments

- MIG, TIG & Spot/Resistance welding
- Complex welded assemblies
- Multi-material welding capacity
- Ground and cosmetic weld finishing
- Stainless Steel, aluminum, carbon steel, and specialty alloys

Sheet Metal Surface Finishes

- Standard mill
- Orbital sanded
- Stainless steel polished
- Cosmetic grinding
- Vibratory rumble
- Deburring
- Time save

High-Accuracy Multi-Axis Machining

- Vertical machining center capabilities
- Supports precision milling, drilling, and tapping
- Designed for repeatable tolerances
- Maintains controlled dimensional accuracy for consistent part quality

CNC Turning & Lathe Operations

- Precision turning
- Machining of cylindrical components
- Threaded features
- Integrates with fabrication & assembly programs

Hardware Insertion

- PEM standard fasteners
- Custom hardware
- PEMS with auto-feed solution
- POP, Spin, Rivets, and Riv-Nuts

Sheet Metal Coating & Plating*

- Powder coat/e coat
- Hot-dipped galvanized
- Black Oxide
- Anodized (clear/all colors)
- Chromate conversion (clear yellow)
- Passivation (clear)
- Tin and silver plating

Part Identification

- Silk screen*
- Laser etching
- Metal stamping
- Ink stamping*
- Dot preen*
- Vibratory etch

Turn-Key Services*

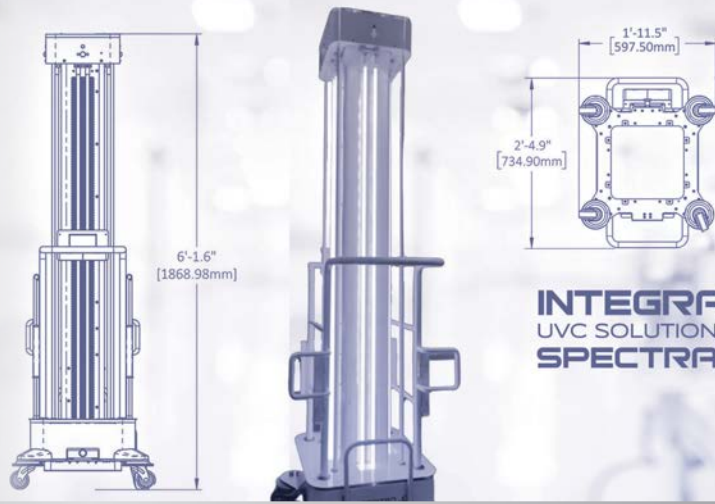
- Engineering and Product Development
- Contract Manufacturing & Assembly
- Solidworks Modeling and Prototyping
- Reverse Engineering Capabilities
- Value Add Engineering
- Design Consulting
- Certification Facilitation

* services provided by our collaborative companies or trusted vendors.

Please contact us for a more detailed discussion about geometries and tolerances for any service or specific work center

FROM CONCEPT TO PRODUCTION

From initial concept to certified production, our team applies Design for Manufacture and Assembly principles, Value Engineering and where needed, Reverse Engineering under one roof; no handoffs, no translation loss.



PRODUCT ENGINEERING

We take your initial ideas and drawings and bring them to life. The cross industry depth of our team has been earned across sectors ranging from medical devices to high end sports equipment. We bring a quality of engineering that most fabricators cannot match.

CERTIFICATIONS

Certification readiness is built into the process from day one. When your product reaches UL or ETL submission, it is ready. In a seasonal market or against a contracted delivery date, that difference is not measured in weeks. It is measured in profit.

Engineering

- Cross-industry engineering depth
- DFMA from day one
- Value engineering
- Reverse engineering capabilities
- Concept to production
- No handoffs or translation
- Built-in certification readiness
- UL and ETL preparation



HIGH PERFORMANCE CONTRACT MANUFACTURING

We understand that OEMs do not need another vendor. They need a manufacturing partner who understands the full arc of a product program. From early-stage engineering through scaled production, quality assurance, assembly, and fulfillment to execute the program and take risk out of the supply chain.



Assemblies

- Vertically integrated manufacturing partner with full program management
- Electrical
- Mechanical
- Electro-mechanical
- Hydraulic
- Pneumatic
- PLC programming and integration
- Packing, inventory management and fulfillment

END-TO-END SERVICES FOR OEMS

Switching manufacturers can be time consuming: that's why so many OEMs stay with suppliers they've outgrown.

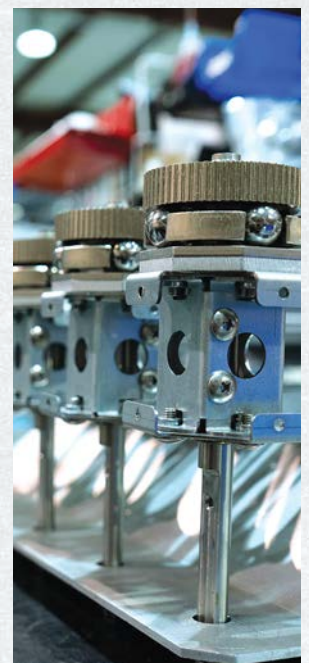
Chapco will manage the transition for you.

We take your print package, run a DFMA review, match your specifications, run a First Article Inspection, and parallel production before you commit to a blanket order. The switch feels like a handoff, not a risk event.

For OEMs looking to re-shore, consolidate their supply chain, reduce vendor risk, and work with a U.S.-based manufacturer with sixty years of proven execution, the conversation starts here.



Book a meeting



CHAPCO

 A Proud American Manufacturer



Chapco Inc. maintains a Quality Management System to promote continuous improvement in all areas of its business operations. We are committed to exceeding our customers' expectations by manufacturing high-quality and competitively priced products delivered on time. Chapco Inc. is dedicated to establishing, developing, and maintaining partnerships with our employees, vendors, and customers, guided by integrity, honesty, and respect.



Schedule a call to discuss your project



CHAPCO

Brian Weinstein

President / CEO

bweinstein@chapcoinc.com

p: +1.860.526.9535 x 102

c: +1.860.227.6909

12 Bridge Street
Deep River, CT 06417

chapcoinc.com

12 Bridge Street, CT 06417

p: 860-526-9535 e: info@chapcoinc.com w: chapcoinc.com